



BRADFORD WHITE®

Commercial Energy Saver Gas Electronic Ignition Model D-38T-155 Millivolt Model DM-38T-155

Features:



Bradford White is ISO registered to the 9001 standard.

D38T155

- **Electronic ignition**—(115V AC required). Ignition system operates off of 24 volts.
- **Controls**—adjustable electronic thermostat to any temperature up to 180°F (82°C). A recycling Energy Cut-Off (E.C.O.) shuts off all gas in event of an overheat condition.

DM38T155

- **Continuous pilot ignition**—continuous pilot ignition eliminates the need for an external electric source which is used on other commercial water heaters.
- **Millivolt controls**—no external electric source is required for water heater operation. Adjustable thermostat to any temperature up to 180°F (82°C). A manual reset Energy Cut-Off (E.C.O.) shuts off all gas in event of an overheat condition.

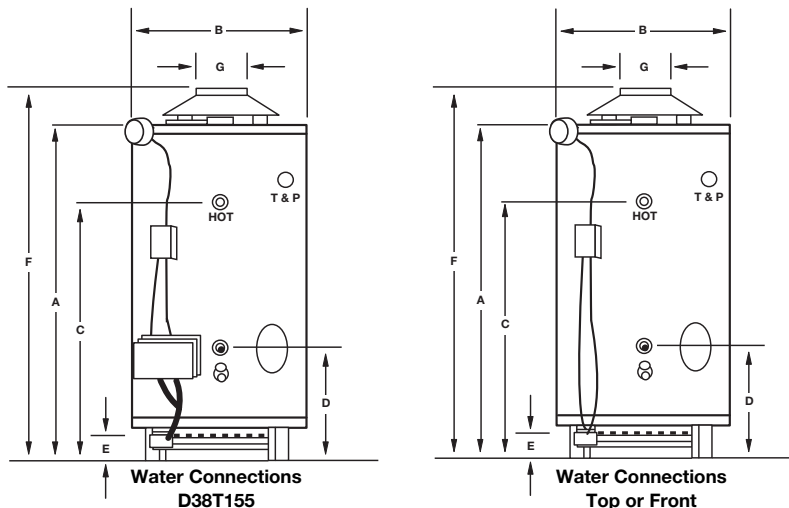
All models feature:

- **Fiberglass insulation.**
- **Vitraglas® lined tank**—Bradford White water heater tanks are protected from the corrosive effects of hot water by an exclusive ceramic porcelain-like coating. The Bradford White Vitraglas® lining provides a tough interior surface for our water heater tanks, which must withstand the wearing effects of high volume and high temperature hot water.
- **Factory installed Hydrojet® Sediment Reduction System**—cold inlet sediment reduction device made of stainless steel for durability. Helps prevent sediment build up in tank.
- **Flue damper**—automatic flue damper reduces stand-by loss, saving money and fuel.
- **Three magnesium anode rods**—employed to provide an extra measure of corrosion prevention for longer life.
- **Hand hole cleanout**—allows inspection of tank interior.
- **NSF construction available.**
- **Brass drain valve.**
- **T&P relief valve installed.**
- **38 gallon (144 liter) storage tank**
- **147 gallons (556 liters) per hour recovery at 100°F (56°C) rise**
- **155,000 BTUH (45.4 KW) input**
- **Three year limited warranty**—protects your investment in a quality glass lined heater. If the tank leaks for reasons of faulty materials, workmanship, or corrosion within the warranty period, the heater will be replaced with a comparable heater of our manufacture. (Exclusive of all shipping and reinstallation costs.) Some states do not allow limitations on warranties. See complete copy of the warranty included with the heater.
- **One year limited parts warranty**—these quality components are manufactured for us by industry leaders and will be replaced in the event of failure during the parts warranty period (exclusive of shipping and reinstallation costs.)
- **Design certified by CSA International (formerly AGA and CGA).**



MANUFACTURED UNDER ONE OR MORE OF THE FOLLOWING U.S. PATENTS: 5,954,492; 5,761,379; 5,943,984; 5,081,696; 5,988,117; 6,142,216; 5,199,385; 6,684,821; 5,574,822; 5,372,185; 5,485,879; 5,277,171; (B)5,341,770; 5,660,165; 5,596,952; 5,682,666; 4,904,428; 5,023,031; 5,000,893; 4,669,448; 4,829,983; 4,808,356; 5,115,767; 5,092,519; 5,052,346; 4,416,222; 4,628,184; 4,861,968; 4,672,919; Re. 34,534. OTHER U.S. AND FOREIGN PATENT APPLICATIONS PENDING. CURRENT CANADIAN PATENTS: 1,272,914; 1,280,043; 1,289,832; 2,045,862; 2,112,515; 2,108,186; 2,107,012.

Commercial Energy Saver Gas-Models D-38T-155 DM-38T-155



ENERGY SAVER MODELS

Includes installed T&P Valve and Flue Damper.

● ▲ ★	MODEL NUMBER	NAT. INPUT BTU	1ST HR. DEL. GAL. AT 100°F RISE	RECOVERY GPH AT DEGREE RISE			STG. CAP. U.S. GAL.	DIMENSIONS IN INCHES											WEIGHT	
				40°	100°	140°		A HT.	B DIA.	C FRONT/ REAR HW CONN.	D FRONT/ REAR CW CONN.	E FLOOR TO GAS CONN.	F TOP VENT HT.	G VENT DIA.	WTR. CONN. DIA.	GAS CONN. DIA.	RELIEF VALVE OPEN.	STD.	ASME	
● ▲ ★	D-38T-155-3N	155,000	174	368	147	105	38	43	28 1/4	34 1/4	19 1/2	4 1/2	51	6	1 1/2	3/4	3/4	438	—	
▲ ★	DM-38T-155-3N	155,000	174	368	147	105	38	43	28 1/4	34 1/4	19 1/2	4 1/2	51	6	1 1/2	3/4	3/4	438	—	

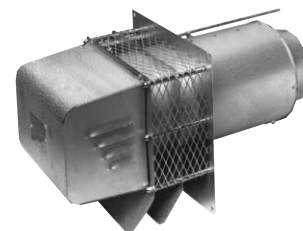
● ▲ ★	MODEL NUMBER	KW INPUT	1ST HR. DEL. LTR. AT 56°C RISE	RECOVERY LPH AT DEGREE RISE			STG. CAP. LITERS	DIMENSIONS IN MILLIMETERS											WEIGHT	
				22°	56°	78°		A HT.	B DIA.	C FRONT/ REAR HW CONN.	D FRONT/ REAR CW CONN.	E FLOOR TO GAS CONN.	F TOP VENT HT.	G VENT DIA.	WTR. CONN. DIA.	GAS CONN. DIA.	RELIEF VALVE OPEN.	STD WT. (KG)	ASME WT. (KG)	
● ▲ ★	D-38T-155-3N	45.4	659	1391	556	397	144	1092	718	883	492	117	1295	152	38	19	19	199	—	
▲ ★	DM-38T-155-3N	45.4	659	1391	556	397	144	1092	718	883	492	117	1295	152	38	19	19	199	—	

- V - 115V AC Required
- - Electronic Ignition
- ▲ - 80% Thermal Efficient
- ★ - Listed with California Energy Commission

Recoveries and First Hour Delivery Rating are based on Thermal Efficiencies ranging up to 80%.
150PSI Working Pressure (1034 kPa), 300PSI Test Pressure (2068 kPa).

(A) - ASME
NSF Available
For LP models change suffix "N" to "X".

**For Low NO_x compliance to meet SCAQMD requirements, place an "E" following the BTU input identifier of the model number.
Example DM38T-155E-3N**



Power Vent Kit available for D38T-155:
Part# 239-81764-00

These models meet or exceed the Thermal Efficiency and Standby Loss Requirements of ASHRAE 90.1b (current edition).

All models are design certified by CSA International (formerly AGA and CGA) for up to 180°F (82°C) application as an Automatic Storage Heater, and an Automatic Circulating Tank Heater.

As an Automatic Storage Heater, all models are complete self-contained water heating systems. It needs no separate storage tank, pump, wiring or elaborate piping network. When equipped with a mixing valve, it will supply 180°F (82°C) sanitizing and 140°F (60°C) general purpose hot water simultaneously. These models can be used either as a single unit or in multiples connected in parallel.

Sample Specification

The water heater shall be a Bradford White model with a rated storage capacity of not less than 38 gallons (144 liters), a minimum gas input of 155,000 BTUH (45.4 KW), and a minimum recovery of 147 GPH (556 LPH) at 100°F (56°C) temperature rise. It shall be design certified by CSA International (formerly AGA and CGA) for 180°F (82°C) application, either with or without a separate storage tank. The tank shall be lined with Vitraglas® vitreous enamel and shall have a bolted hand hole cleanout. The tank shall have three extruded magnesium anode rods installed in separate head couplings and extended to within 3" (76mm) of the bottom. This water heater shall be equipped with stainless steel cold water inlet Hydrojet sediment reduction system. This water heater shall be equipped with an ASME rated T&P valve, a factory supplied flue damper and ignition system. (115V AC required). The entire installation shall be made in compliance with state and local codes and ordinances.

Dimensions and specifications subject to change without notice in accordance with our policy of continuous product improvement.

Hydrojet® and Vitraglas® are registered trademarks of Bradford White® Corporation.
©2004, Bradford White Corporation. All rights reserved.



For U.S. and Canada field service, contact your professional installer or local Bradford White sales representative.

Sales/800-523-2931
Fax/215-641-1670
Technical Support/800-334-3393
Fax/269-795-1089
Warranty/800-531-2111
Fax/269-795-1089
International:
Telephone/215-641-9400
Telefax/215-641-9750
Fax on Demand:
888-538-7833
www.bradfordwhite.com



Sales/866-690-0961
905-238-0100
Fax/905-238-0105
Technical Support/800-334-3393
www.bradfordwhitecanada.com

PRODUCTS ONLY FOR PROFESSIONALS