



Commercial Electric Booster

Features:

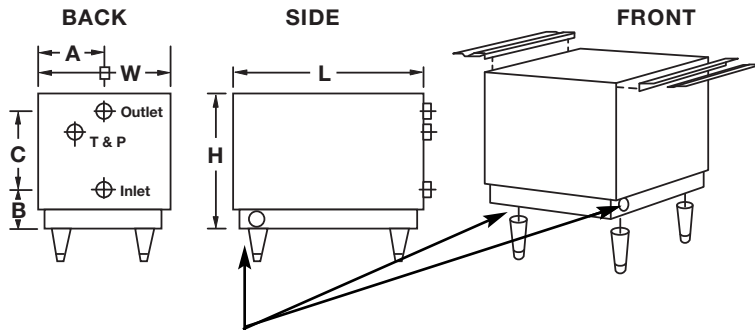
- **Electric booster water heaters** are highly compact 100% efficient and the most economical means for raising rinse water temperatures to the required 180°F. Minimal storage means instantaneous hot water; intended for water that has been preheated in a primary heater, no temperature lag, no lost time for the heating of storage water, no off-cycle operation to overcome stand-by losses. May be turned on when dishwasher is in use for maximum economy of operation. Designed specifically for under-counter use to save valuable floor space. Boosters may be under-counter mounted with slide out hangers or free standing on 6" adjustable legs. Electric booster water heaters are available in recoveries to meet the requirements of even the largest commercial dishwashers.
- **Heavy gauge glass-lined, steel tank**—150 PSI working pressure, 300 PSI test pressure.
- **Copper sheathed**, low watt density elements easily replaceable.
- **6" legs are furnished.**
- **Pilot switch** — pilot light — Hi limit control.
- **Attractive stainless steel front control cover.**
- **Temperature—pressure gauge.**
- **ASME temperature and pressure relief valve.**
- **Full 2" blanket insulation.**
- **Magnesium anode rod.**
- **Instantaneous response**—no stand-by losses.
- **Low cost operation.**
- **Meets fusing requirements of National Electric Code.**
- **Temperature ranges from 150°F to 180°F.**
- **Continuous 180°F. water for commercial dishwashing.**
- **11 sizes from 6 KW to 58 KW.**
- **3 year limited warranty.**
- **Optional Equipment**—pressure reducing valve with built-in bypass check, built-in low water cut-off, slide out mounting bracket for under-counter installation, stainless steel jacket and legs. ¾" shock absorber (water hammer arrestor).

BURNERS

LISTED



Commercial Electric Booster



Electrical Connections: 6-18 KW—either side or bottom; 24-58 KW—left side or bottom

Water Connections: 3/4" NPT on 8" center nipples for hot and cold

Note: 6 and 9 KW 3 phase wiring is unbalanced.

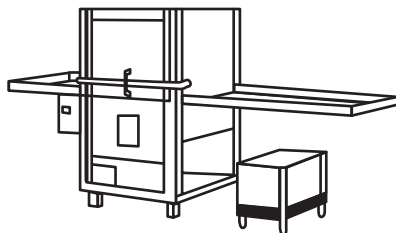
Amperage Draw

KW	One Phase		Three Phase		
	208V	240V	208V	240V	480V
6	29	25	25	22	N/A
9	43	38	38	33	N/A
12	58	50	33	29	14
15	72	63	42	36	18
18	83	72	48	42	21
24	116	100	67	58	29
30	144	125	83	72	36
36	173	150	100	87	43
45	216	188	125	109	54
54	259	229	150	130	65
58	279	242	161	141	71

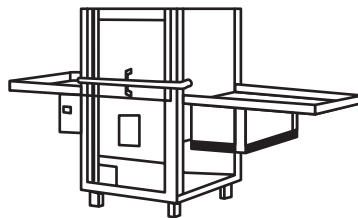
Specifications and Dimensions

MODEL	KW	Recovery—GPH Rise—°F			Gal. Cap.	Dimensions (Inches)							Water Conn.	Approx. Shipping Weight (Lbs.)
		40°	70°	BTU/HR		L	W	H	A	B	C			
L-I-6-6-3CF	6	62	35	20,478	6	20 3/4	13	13 3/4	6 1/2	3 1/2	8	3/4	118	
L-I-6-9-3CF	9	93	53	30,717	6	20 3/4	13	13 3/4	6 1/2	3 1/2	8	3/4	118	
L-I-6-12-3CF	12	124	71	40,956	6	20 3/4	13	13 3/4	6 1/2	3 1/2	8	3/4	118	
L-I-6-15-3CF	15	155	89	51,195	6	20 3/4	13	13 3/4	6 1/2	3 1/2	8	3/4	118	
L-I-6-18-3CF	18	186	106	61,434	6	20 3/4	13	13 3/4	6 1/2	3 1/2	8	3/4	118	
L-I-6-24-3CF	24	248	142	81,912	6	24	18	12	8	2	8	3/4	158	
L-I-6-30-3CF	30	310	177	102,390	6	24	18	12	8	2	8	3/4	158	
L-I-6-36-3CF	36	372	213	122,868	6	24	18	12	8	2	8	3/4	158	
L-I-6-45-3CF	45	465	266	153,585	6	24	18	12	8	2	8	3/4	158	
L-I-6-54-3CF	54	558	316	184,302	6	24	18	12	8	2	8	3/4	158	
L-I-6-58-3CF	58	600	343	197,954	6	24	18	12	8	2	8	3/4	158	

Installs either of two ways



Free Standing



Counter Mounted

Typical Specification

ELECTRIC BOOSTER WATER HEATER shall be BRADFORD WHITE Model # _____ with _____ KW input, _____ volts, _____ phase. Tank construction will be for 150 PSI working pressure. Interior surface will be glass-lined with 3 year limited warranty. Jacket shall be baked enamel finish with a stainless steel front panel. Booster package will include 6" legs for floor mounting. (Slide out mounting bracket for under-counter installation—optional). Control circuit will consist of pilot switch with indicator light and built-in thermostat and hi-limit, magnetic contactors. Heater elements shall be copper-sheathed, furnished with 4 bolt flange so they may be easily removed for replacement without disassembly of booster head. Unit will be furnished complete with ASME temperature and pressure relief valve, temperature and pressure gauge. Water Heater to meet fusing requirements of National Electric Code.

Dimensions and specifications subject to change without notice in accordance with our policy of continuous product improvement.



For U.S. and Canada field service, contact your professional installer or local Bradford White sales representative.

Sales/800-523-2931
Fax/215-641-1670

Technical Support/800-334-3393
Fax/269-795-1089

Warranty/800-531-2111
Fax/269-795-1089

International:
Telephone/215-641-9400
Telefax/215-641-9750

Fax on Demand:
888-538-7833

www.bradfordwhite.com



Sales/Technical Support
866-690-0961
905-238-0100

Fax/905-238-0105

www.bradfordwhitecanada.com