



RESIDENTIAL ELECTRIC REPLACEMENT PARTS LIST

Energy Saver (M1, M2) Utility Models



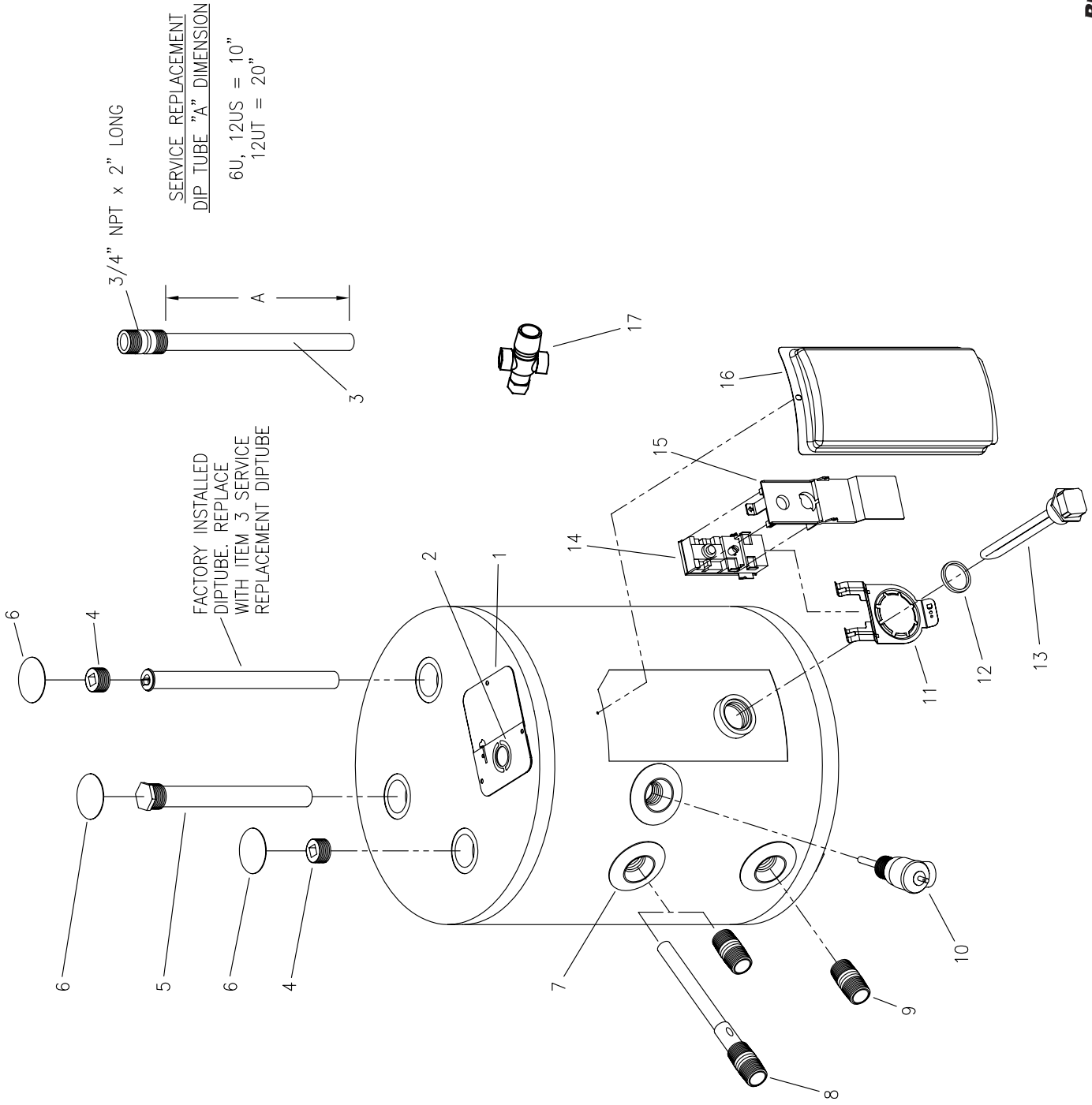
***Effective: February, 2008
ECO 7267***

**NOTE: BOTH MODEL AND SERIAL
NUMBERS ARE REQUIRED FOR
ORDERING REPLACEMENT PARTS**

Dimensions and specifications
subject to change without notice.

Item	Description	Model
		M1-2U*SS
1	Hot Water Outlet Anode (Magnesium)	224-32731-103
	Hot Water Outlet/Anode (Aluminum)	224-32999-32
2	Cold Water Inlet Dip Tube (PPDTA)	229-32730-67
	Cold Water Inlet Dip Tube (PSDTA) (NC Code)	229-34189-46
3	T&P Relief Valve	265-32920-01
4	Strain Relief Bushing	239-80372-00
5	Thermostat	219-40360-00
6	Thermostat Cover	223-40399-00
7	Hand Hole Cover	239-44929-00
8	Heating Element	265-42540-02
9	Element Gasket	223-34019-00
10	Thermostat Bracket	239-44479-00
11	Power Cord	239-38846-00
12	ASSE Approved Mixing Valve (Optional)	239-43740-01

*Applies to all warranties



Item	Description	Model		Model		Model		Model	
		M16U*SS	M112U*SS	M112U*SS	M112UT*SS	M120U*SS	M120U*SS	M230U*SS	
1	Junction Box Cover	243-39452-00	243-39452-00	243-39452-00	243-39452-00	243-39452-00	243-39452-00	243-39452-00	
2	Bracket-Grounding/Conduit	243-39451-00	243-39451-00	243-39451-00	243-39451-00	243-39451-00	243-39451-00	243-39451-00	
3	Service Replacement Dip Tube (Polypropylene)	243-44520-01	243-44520-01	243-44520-01	243-44520-02	---	---	---	
4	Service Replacement Dip Tube (Polysulfone) (NC Code)	243-44521-01	243-44521-01	243-44521-01	243-44521-02	---	---	---	
5	Pipe Plug 3/4 NPT	239-11638-00	239-11638-00	239-11638-00	239-11638-00	---	---	---	
6	Anode Rod Hex Head (Magnesium)	224-32758-37	224-32758-37	224-32758-25	224-32758-25	---	---	224-32758-25	
7	Anode Rod Hex Head (Aluminum)	224-38508-08	224-38508-08	224-38508-09	224-38508-09	---	---	224-38508-09	
8	Hole Closure	239-31547-02	239-31547-02	239-31547-02	239-31547-02	---	---	239-31547-02	
9	Escutcheon	239-41336-00	239-41336-00	239-41336-00	239-41336-00	239-41336-00	239-41336-00	239-41337-00	
10	Hot Water outlet Anode (Magnesium)	---	---	---	---	---	224-32731-108	---	
11	Hot Water outlet Anode (Aluminum)	---	---	---	---	---	224-32999-33	---	
12	Inlet/Outlet Nipple	229-32762-03	229-32762-03	229-32762-03	229-32762-03	229-32762-03	229-32762-03	229-32762-03	
13	T&P Relief Valve	265-32920-01	265-32920-01	265-32920-01	265-32920-01	265-32920-01	265-32920-01	230-40594-02	
14	Thermostat Bracket	239-44479-00	239-44479-00	239-44479-00	239-44479-00	239-44479-00	239-44479-00	239-44479-00	
15	Element Gasket	223-34019-00	223-34019-00	223-34019-00	223-34019-00	223-34019-00	223-34019-00	223-34019-00	
16	Heating Element 1500W, 120V Copper**	265-42540-02	265-42540-02	265-42540-02	265-42540-02	265-42540-02	265-42540-02	265-42540-02	
17	Heating Element 1500W, 120V Incoloy**	265-42541-02	265-42541-02	265-42541-02	265-42541-02	265-42541-02	265-42541-02	265-42541-02	
18	Thermostat	265-40694-00	265-40694-00	265-40694-00	265-40694-00	265-40694-00	265-40694-00	265-40694-00	
19	Thermostat Cover	223-40399-00	223-40399-00	223-40399-00	223-40399-00	223-40399-00	223-40399-00	223-40399-00	
20	Hand Hole Cover	243-36618-02	243-36618-02	243-36618-02	243-36618-02	243-36618-02	243-36618-02	243-36618-02	
21	ASSE Approved Mixing Valve (Optional)	239-43740-01	239-43740-01	239-43740-01	239-43740-01	239-43740-01	239-43740-01	239-43740-01	

*Applies to all warranties

**For other wattages/voltages, consult Residential Heating Element Replacement Parts List.



Item	Description	Model	Model
1	Escutcheon	239-41336-00	239-41336-00
2	T&P Relief Valve	265-32920-01	265-32920-01
3	Inlet/Outlet Nipple	229-32762-03	229-32762-03
4	Anode Rod Hex Head (Magnesium)	224-32758-32	224-32758-32
5	Anode Rod Hex Head (Aluminum)	224-38508-08	224-38508-08
6	Thermostat	265-40694-00	265-40694-00
7	Thermostat Bracket	239-44479-00	239-44479-00
8	Element Gasket	223-34019-00	223-34019-00
9	Heating Element 1500W, 120V Copper**	265-42540-02	265-42540-02
10	Heating Element 1500W, 120V Incoloy**	265-42541-02	265-42541-02
11	Thermostat Cover	223-40399-00	223-40399-00
12	Hand Hole Cover	243-36618-02	243-36618-02
13	Bracket-Grounding/Conduit	239-46167-00	239-46167-00
14	ASSE Approved Mixing Valve (Optional)	239-43740-01	239-43740-01

*Applies to all warranties

**For other wattages/voltages, consult Residential Heating Element Replacement Parts List.



BRADFORD WHITE®

C O R P O R A T I O N

Ambler, PA

For U.S. and Canada field service,
contact your professional installer or
local Bradford White sales representative.

Sales/800-523-2931
Fax/215-641-1670
Parts Fax/215-641-2180

Technical Support/800-334-3393
Fax/269-795-1089

Warranty/800-531-2111
Fax/269-795-1089

International:
Telephone/215-641-9400
Telefax/215-641-9750



BRADFORD WHITE-CANADA® INC.

Mississauga, ON

Sales/866-690-0961
905-238-0100

Fax/905-238-0105

Technical Support/800-334-3393

Email

parts@bradfordwhite.com
techserv@bradfordwhite.com

www.bradfordwhite.com